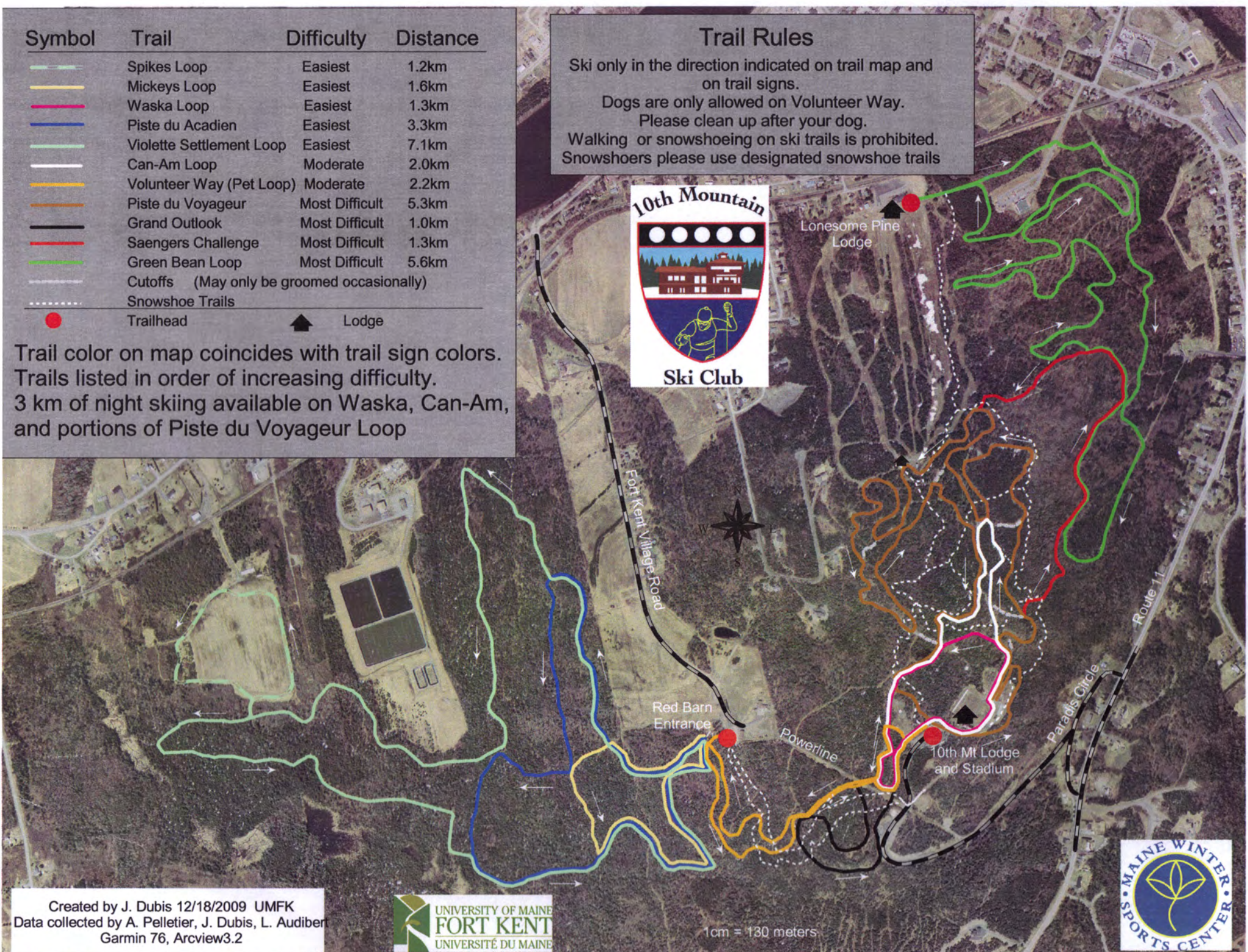


Symbol	Trail	Difficulty	Distance
	Spikes Loop	Easiest	1.2km
	Mickeys Loop	Easiest	1.6km
	Waska Loop	Easiest	1.3km
	Piste du Acadien	Easiest	3.3km
	Violette Settlement Loop	Easiest	7.1km
	Can-Am Loop	Moderate	2.0km
	Volunteer Way (Pet Loop)	Moderate	2.2km
	Piste du Voyageur	Most Difficult	5.3km
	Grand Outlook	Most Difficult	1.0km
	Saengers Challenge	Most Difficult	1.3km
	Green Bean Loop	Most Difficult	5.6km
	Cutoffs (May only be groomed occasionally)		
	Snowshoe Trails		
	Trailhead		
	Lodge		

Trail color on map coincides with trail sign colors.
 Trails listed in order of increasing difficulty.
 3 km of night skiing available on Waska, Can-Am,
 and portions of Piste du Voyageur Loop

Trail Rules

Ski only in the direction indicated on trail map and on trail signs.
 Dogs are only allowed on Volunteer Way.
 Please clean up after your dog.
 Walking or snowshoeing on ski trails is prohibited.
 Snowshoers please use designated snowshoe trails



Created by J. Dubis 12/18/2009 UMFK
 Data collected by A. Pelletier, J. Dubis, L. Audibert
 Garmin 76, Arcview3.2



1cm = 130 meters

